

HIGH SPEED PRINTER IN-LINED PRESSURE SEALER

interfaced with Konica Minolta High-Speed printers/copiers

MailFinisher 120A(T) / 105A(T)



THE ULTIMATE INSTANT MAIL PRODUCTION SOLUTION

Mailfinisher 120A(T) / 105A(T)

Super Fast, Easy, Reliable and Secure operations with Modern and Ecological Instant Mail Production lines

Solution 01

PRODUCTIVITY

High speed print-to-mail solution in one step. Offering proven in-line mail processing technology, enhanced durability and simple maintenance operations enabling drastic cost down.

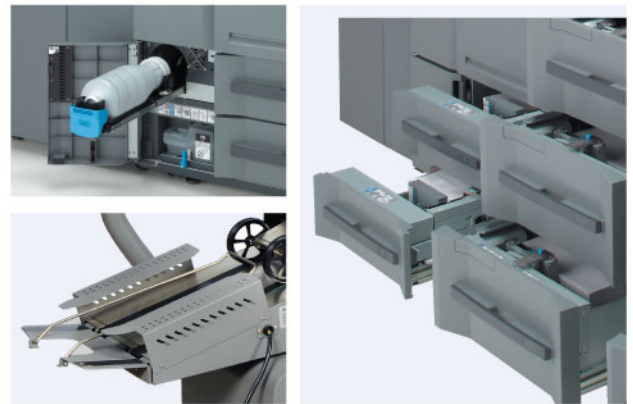
Daily Capacity : up to 50,000 sheets

120ppm, maximum 7200 sheets / hour (Mailfinisher 120A(T))

105ppm, maximum 6300 sheets / hour (Mailfinisher 105A(T))

Duty Cycle 600,000 sheets / month

A single operator can handle both the printer trays' loading and collecting ready to mail documents while the instant mail production process is running.



PRINT-TO-MAIL

Proven In-line Mail Production

Your printed documents are ready to mail in a few seconds after being personalised.

Operator efforts and controls are minimised. The in-line solution requires very little floor space.

No waste of time and energy, quick re-load and job turnaround.

Angle Feeding System

To optimise productivity with document Landscape output on High Speed printers, the Angle Feeding System rotates the Landscape printed flow towards the pressure sealer.



Solution 02

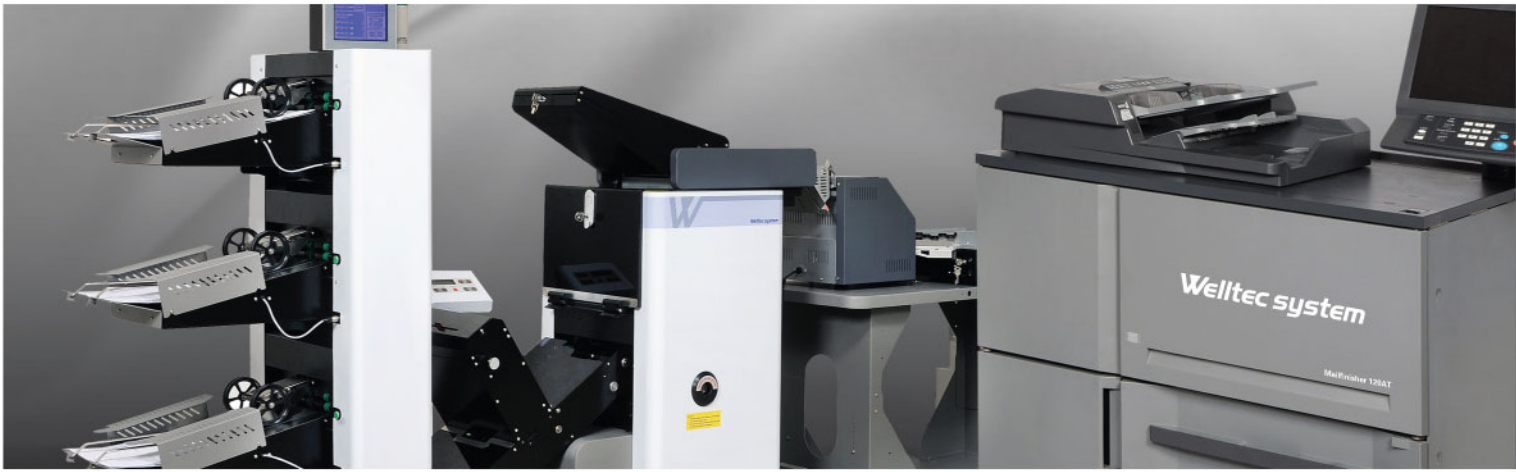
SECURE PROCESSING

Multiple Security Locks

The security locks allow only an authorised person to open locks and have secured access to personalised documents and data.

Five access locks secure strategic confidential data such as salaries, pin code and password, etc. to enable maximum confidentiality and safety.



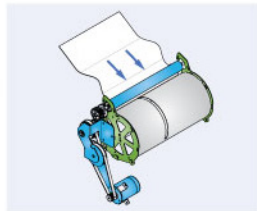


Solution 03 RELIABILITY

FEEDING/FOLDING ERROR PREVENTION

Aligned Folding Technology

A compact and efficient document registration (alignment) module prepares the in-line folding process and reduces cycle error risks significantly.



Air Suction Feeding

All paper trays of Konica Minolta Bizhub Pro series and their Extra Feeders (PF-703) are designed using a performing and reliable air-suction technology



BYPASS TRAY

Double Feed Bypassing

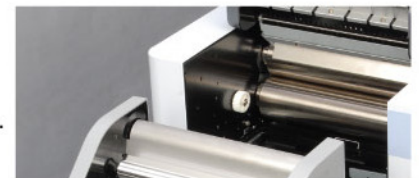
A digital sensor detects and diverts double sheets into a bypass tray without job interruption. The instant mail production operations continue smoothly for the next documents.



TOP SEALING QUALITY

Enhanced Sealing Mechanism

Two pairs of pressure rollers seal the documents through a unique Angle Sealing Technology. It reduces noise level and increases pressure and sealing quality with less mechanical efforts. This results in cycle error reduction and easier maintenance.



Solution 04 OUTSTANDING DURABILITY

Performance for High Volume Jobs

Designed for up to 1 million sheets per month. Increased reliability for large Mail Fulfilment jobs and large volume personalisation and mailing centres





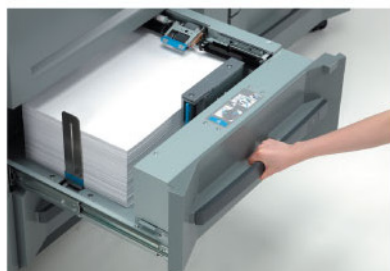
Solution 05 USER-FRIENDLY

FLEXIBLE & EFFICIENT FEEDING (less re-load time)

Up to 8,000 Sheets Loading Capacity

The Printer is delivered with two trays of 1,500 sheets capacity each as standard. An optional Extra Feeder (PF-703) adds another 5,000 sheets autonomy for non-stop printing.

(80g/m² standards)

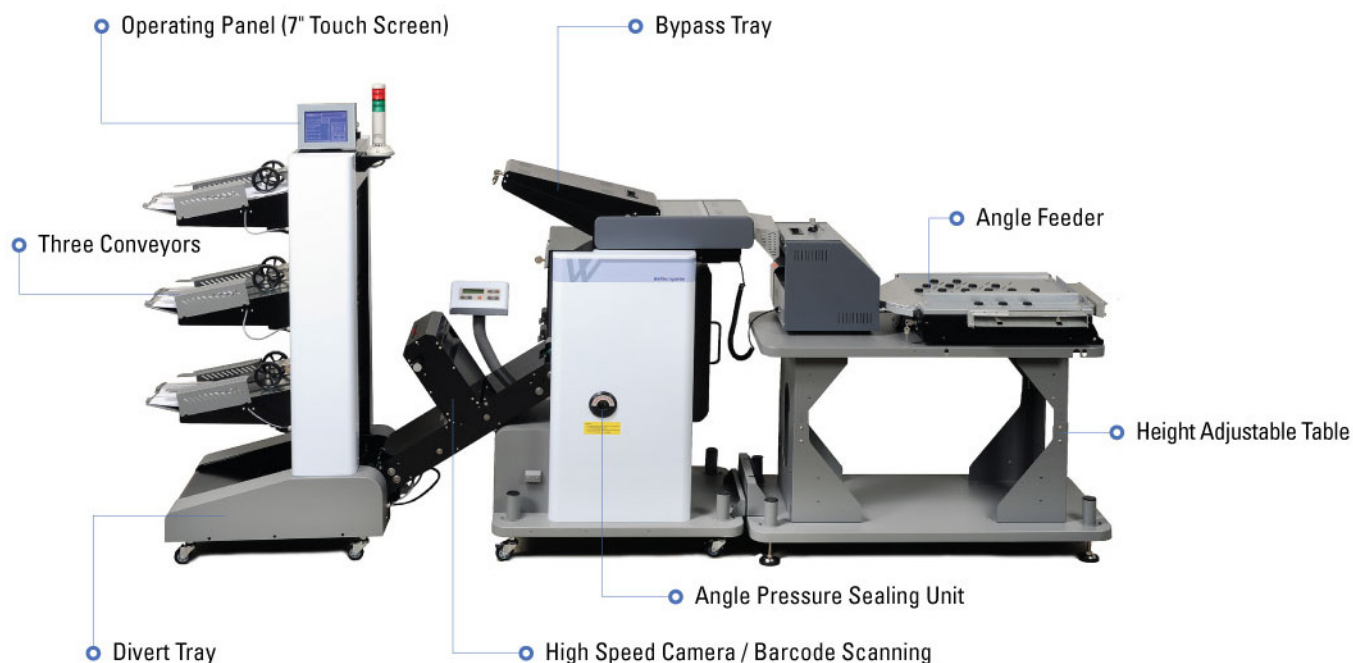


Auto-Lock for Trays in Use

The tray which is in use is locked automatically to prevent job interruption and cycle errors by opening the tray during mail production operations.



ADAPTABLE TOWER STACKER & CAMERA



Solution
06**TOWER STACKER**

The adaptable Tower Stacker integrates three built-in conveyors allowing intelligent handling of large instant mailing jobs in a small space

KEY FEATURES

- Remote Printer Control
- Cascading Mail Piece Output on Three Stackers
- 7" Touch Screen Panel & Job Status Tower Lamp
- High Speed Camera Reading (option)

**Remote Printer Control**

A Pause Switch stops the printer if a cycle error is detected or when all 3 output conveyors are full.

**Cascading Mail Piece Output on Three Stackers**

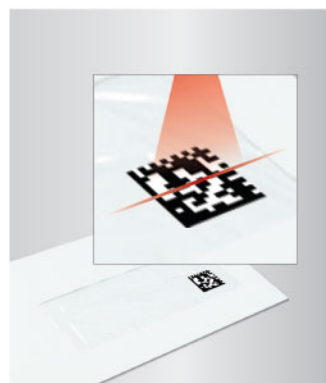
- Maximum 700 mailers on each conveyor stacker
- When a stacker is full, its green button (control signal) blinks
- Then it detects the available (empty) output stacker automatically
- Batch count is available for each stackers' output and content control
- If all stackers are full, the complete production line stops automatically
- The stackers (conveyors) are self-extended with their Auto-Sliding device

**7" Touch Screen Panel & Job Status Tower Lamp**

- User friendly large (7") touch screen control panel
- Batch/Total count per conveyor can be set and displayed
- Job Status Tower Lamp informs the operator of possible production stops
- Operator effort is minimised through easy controls and access of the compact production line

**High Speed Camera (option)**

- Barcode data reading allows integrity and completion controls on large volume mailing job
- The data is transferred through a USB device
- Mail pieces with mismatching or unreadable barcodes are diverted into a tray at the base of the Tower Stacker
- Enables the cross-checking of the processed mailpieces with the original database
- Easy tracking and control of the processed and unprocessed mail for efficient Job Integrity control

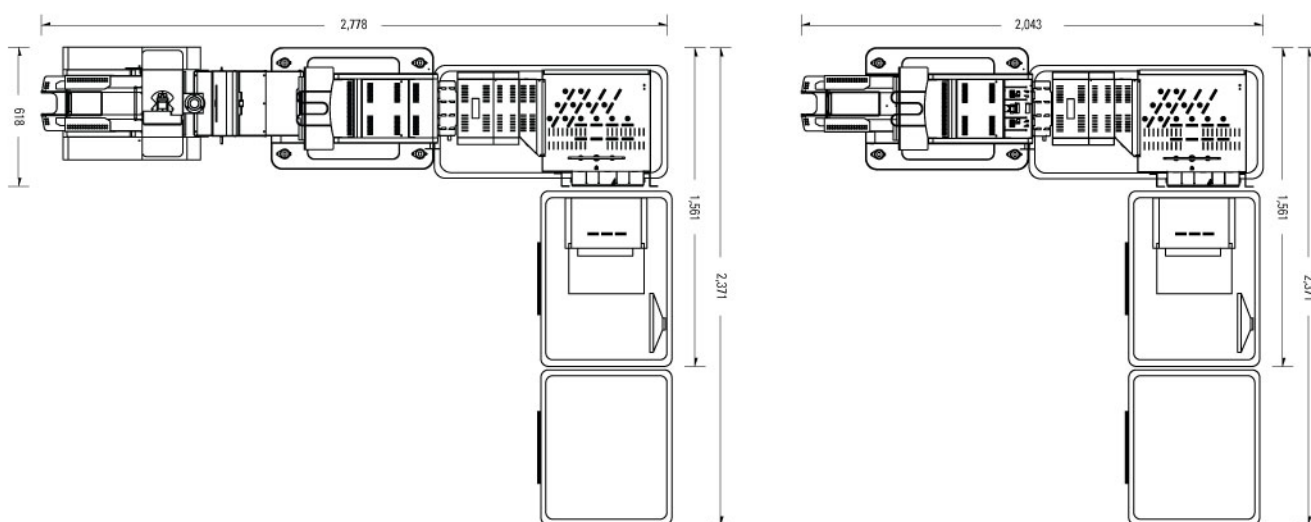


SPECIFICATION

◎ Basic Information

Model	Mailfinisher 120A	Mailfinisher 120AT	Mailfinisher 105A	Mailfinisher 105AT
Speed	mono120ppm	mono120ppm	mono105ppm	mono105ppm
Output	slide conveyor	tower stacker	slide conveyor	tower stacker
Output Capacity (max.)	700 sheets	2100 sheets	700 sheets	2100 sheets
Batch Counter	X	0	X	0
Printer Remote Control	X	0	X	0
High Speed Barcode Camera	X	option	X	option
Sealing Type	low noise Angle Sealing Unit (4 Rollers)			
Folding Type	Z, C, V & Double			
Forms	Size : A4, Letter			
	weight : 60 ~ 120 gsm			
Double Feed Divert	detecting & bypassing to tray by sensor			
Forms Transfer	Angle Feeder and Transfer Unit			
Feeder Capacity	3,000 sheets (1,500 sheets x 2)			
Printer Language	PCL 5e / XL / TIFF Direct Print PostScript 3 (PS 3017) / PDF Direct Print (PDF Ver. 1.6)			
Network Protocol	TCP/IP, IPX/SPX, NetBEUI, EtherTalk, IPP			
Interface	Ethernet (1,000 Base-T, 100 Base-T, 10 Base-T), USB 2.0			
Voltage & Hertz	220V, 60Hz / 230V, 50Hz / 110V, 60Hz			
Option	Extra Feeder (PF-703) : 5,000 sheets, air-suction			
	high speed camera (barcode scanning)			

※ The above specification are subject to change



Welltec system

Welltec System Co., Ltd.

1376-4, Seonyu-ri, Munsan-eup,
Paju-si, Gyunggi-do, 413902, South Korea
Tel. +82 31 954 4711 Fax. +82 31 954 2712

Distributed by:

PARADIGM - +40 770 346871

Timisoara, str. A. Demetriade 30, 300261, Romania,

www.paradigm-solutions.ro

PARADIGM
FASTER · BETTER · SMARTER